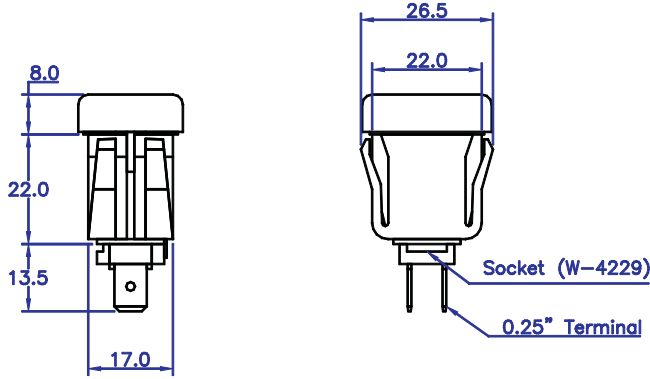


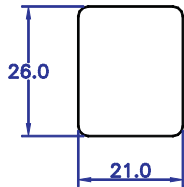
Appendix B

Indicator Lights

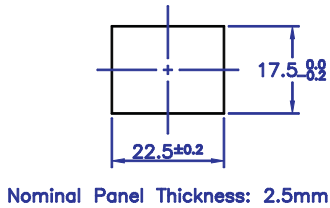
Deluxe Indicator Light



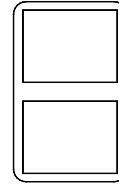
Top View: Cap



Panel Cut Out



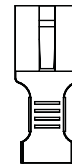
Accessories



S-4866
Indicator Light
Bezel Insert



W-ST2-250
Connector



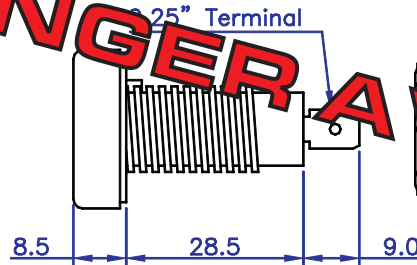
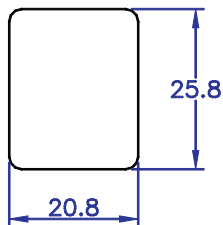
W-824025
Terminal

Replacement Parts:

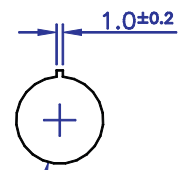
- Socket: W-4229
- 12V Bulb: W-86133
- 24V Bulb: W-822122

Economy Indicator Light

Top View: Cap



Panel Cut Out



NO LONGER AVAILABLE

Euramtec Corporation

29650 Grand River Ave.
Farmington Hills, MI
48336-5622 U.S.A.

WWW.EURAMTEC.COM



Tel: (248) 473-8660
Fax: (248) 473-8662
sales@euramtec.com

Using The Modular Part System

The modular part system for indicator lights consists of a string of 11 numbers divided into 5 segments

Type of Housing	Voltage	Type & Color of Cap	Color of Filter	Filter Symbol
XX	XX	XX	XX	-XXX

Step #1: Type of Housing

No.	Type	Shape
23	Deluxe	Square
NO LONGER AVAILABLE		

Select the type of Housing that best suits the application. Both types can be individually panel mounted.

The Deluxe can also be used in the Flush Mount Bezels. The Economy requires the drilling of a mounting hole.

Step #3: Cap Color

No.	Cap
12	Red
13	Green
14	Amber
26	Smoked

Select the type and color of the cap.

Step #5: Filter Symbol

Select the symbol graphics that match the indicator light's function. Choose from either a library of the symbols or design a customized symbol. Symbols are only available on clear filters.

See Page B-3 for a sample of the graphics.

Step #2: Voltage

No.	Voltage
12	12 Volts
24	24 Volts

Select the voltage required.

Step #4: Filter Color

No.	Filter Color
26	Blue
27	Green
28	Red
29	Amber
30	Clear

Select a color backing filter. A colored backing filter is necessary to achieve the desired lighting effect with the indicator lights. If using a colored cap the filter color should match the color of the cap.

An example of the modular part system:

The part number, **23 12 26 28 - 042**, is the equivalent to a fully assembled 12 Volt, Deluxe indicator light with a smoked cap, a red backing filter, and a clear filter with the symbol "Stop Engine" printed on it.

Euramtec Corporation

29650 Grand River Ave.
Farmington Hills, MI
48336-5622 U.S.A.

WWW.EURAMTEC.COM



Tel: (248) 473-8660
Fax: (248) 473-8662
sales@euramtec.com

Filter Symbols

Standard and Custom Graphics for Indicator Lights

11	12	13	16	17	18	20	21	22	23	24	27
BRAKE DIFF PRESS	PARK BRAKE	A / C		E.U.L.	BRAKE		REAR DOOR OPEN	SIDE DOOR OPEN	VENT OPEN	WAIT TO START	
29	30	31	32	33	34	35	36	37	38	40	41
						BRAKE LIGHTS					CRUISE CONTROL
42	43	44	45	46	47	48	49	51	52	53	54
STOP ENGINE		BAJA PRESION AIRE	CONTROL CRUCERO	REVISOR MOTOR	PARO MOTOR	NIVEL ACEITE		MOTOR STOP			AR
55	56	57	58	60	61	62	63	64	65	66	67
AV				ENGINE SHUTDOWN	ENGINE FIRE	ENGINE OVERHEAT	ENGINE OVERRIDE	A/C FAILURE	PARKING BRAKE	CHECK ENGINE	WATER TEMP
68	69	70	71	72	73	74	75	76	77	78	79
OIL PRESSURE	LIFT DEPLOYED	LOW COOLANT	ALT FAILURE	DOOR AJAR	DIFF BRAKE PRESSURE	EMR	DOOR OPEN	DOOR CLOSED	BRAKE INTERLOCK		MOTOR TEMP
80	81	82	83	84	85	86	87	88	89	90	91
DRIVE TEMP	PUMP FAILURE	12 V LOW	BRAKE AIR	ELECTRIC BRAKE	TANK FULL	TANK EMPTY	ABS			REV TRANSM	LAVATORY ALARM
92	93	94	95	96	97	98	99	100	101	102	103
LOW AIR AXLE	NOT CHARGING	HEAT ON	STOP LIGHT	FIRE ALARM	LEFT WIPER	RIGHT WIPER	WINDSHIELD WASHER	A/C HEATER	INSTRUMENT HI - LO	BACKUP LIGHT	ENGINE OVERHEAT
104	106	107	108	109	110	111	112	113	114	115	116
FRENO ELECTRICO	PROTECCION MOTOR	DIAGNOSTICO MOTOR	GUNLOCK MOMENTARY	FORWARD SPOTS	ALLEY RIGHT	ALLEY LEFT	REMOTE MICROPHONE	ROTATORS	REAR FLASH	FRONT FLASH	PRISONER CAGE
117	118	119	120	121	122	123	124	125	127	128	129
MOBILE DATA TERMINAL	VIDEO CAMERA	CHECK TRANSM	LOCK REAR DOOR	SEGURO CAJUEL ABIERTO	HIGH IDLE		BAJA PRESION ARTIC	ALTA PRESION ARTIC		MAXIMO ANGULO	1500 RPM

This sheet contains a sample of the filter symbols available. If the graphics needed are not on this list, please contact us for a more comprehensive listing with over 150 symbols. Custom graphics can be designed upon request.

Euramtec Corporation

29650 Grand River Ave.
Farmington Hills, MI
48336-5622 U.S.A.

WWW.EURAMTEC.COM

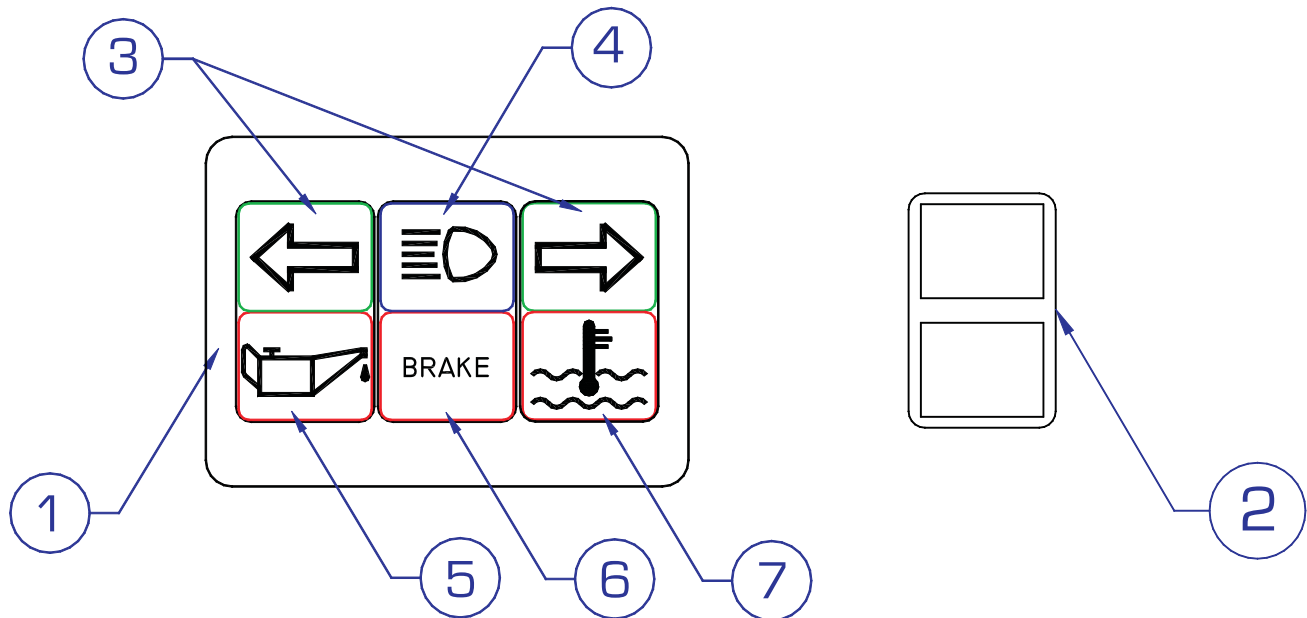


Tel: (248) 473-8660
Fax: (248) 473-8662
sales@euramtec.com

How to use The Modular Indicator System

Module Composition

This is an example that shows how to combine the various elements of the Modular Indicator System into a single module.



Sample 12V Instrument Panel Indicator Light Module Part List

ITEM	QTY.	DESCRIPTION	PART NUMBER
1	1	3 - Gang Flush Mount Bezel	A-822536-4
2	3	Indicator Light Bezel Insert	S-4866
3	2	"Left & Right Turn" Indicator Lights (Symbol #058) with Smoked Cap and Green Backing Filter	A-23122627-058
4	1	"High Beam" Indicator Light (Symbol #033) with Smoked Cap and Blue Backing Filter	A-23122626-033
5	1	"Low Oil Pressure" Indicator Light (Symbol #004) with Smoked Cap and Red Backing Filter	A-23122628-004
6	1	"Brake" Indicator Light (Symbol #018) with Smoked Cap and Red Backing Filter	A-23122628-018
7	1	"Water Temperature" Indicator Light (Symbol #005) with Smoked Cap and Red Backing Filter	A-23122628-005

Optional Accessories:
6 ST2-03 Connector Pigtails for Indicator Lights

Euramtec Corporation

29650 Grand River Ave.
Farmington Hills, MI
48336-5622 U.S.A.

WWW.EURAMTEC.COM



Tel: (248) 473-8660
Fax: (248) 473-8662
sales@euramtec.com